

DARWIN

SWEATSHIRT



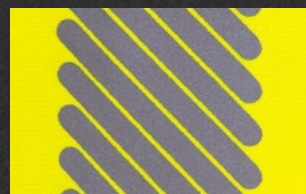
EN ISO 20471 (2013) + A1 (2016)



THE + PRODUCT



100% polyester warm and comfortable mesh.



Heat transferred microbeads retroreflective segmented strips for greater wearing comfort.



Ribbed cuffs.

CARE



YELLOW/GREY, ORANGE/GREY:
50 cycles at 40°C (according to ISO 6330 4N – EN ISO 20471 + A1).

RED/NAVY:
25 cycles at 40°C (according to ISO 6330 4N – EN ISO 20471 + A1).

SIZE

S to 3XL
Other size, on demand.

PACKAGING



Box of 50.
Individual transparent packaging.



SWEATDARW2IG ●●



SWEATDARW2OG ●●



SWEATDARW2RM ●●



PRODUCT DESCRIPTION

- Inset sleeves.
- Ribbed high collar with zip fastening.
- Ribbed cuffs.
- Two heat transferred RETHIOTEX® microbeads retroreflective segmented strips of 5 cm over shoulders, one around body and four armbands.
- Contrasting insert at bottom of sweatshirt for sizes L, XL, 2XL and 3XL.



RAW MATERIALS

OUTER FABRIC

- 100% polyester brushed mesh one side (300 g/sqm).

RETROREFLECTIVE FABRIC

- RETHIOTEX® 26 250-01 microbeads retroreflective segmented transfer. 70 washing cycles at 60°C (according to ISO 6330 6N).



COMPLIANCE AND EXAMINATION CERTIFICATE

Compliance with the essential safety requirements has been verified using the following harmonised standards:

- **EN ISO 13688 (2013)** for protective clothing - general requirements.
- **EN ISO 20471 (2013) + A1 (2016)** for high visibility warning clothing.

The examination certificate was awarded by Centexbel to the following model of personal protective equipment:

SWEATDARW2
N° 033/2022/1036



CUSTOMIZATION

CHEST HEART SIDE



Maximum dimensions:
80 x 50 mm | 60 x 60 mm

BACK



Maximum dimensions:
200 x 100 mm | 150 x 150 mm

Before going into production, we make a proof of concept from the **vector file (vectorised .eps, .ai, .pdf)** you send us.

Certain technical requirements may prevent us from printing in the desired location.

OTHER MARKING, PLEASE CONTACT US.